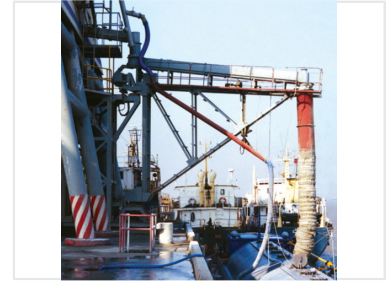


# Bulk Material Handling System

This heavy-duty system efficiently transfers bulk materials between dockside facilities and vessels. It incorporates a large-diameter vertical pipe and a conveyor belt system supported by a lattice framework.



## System Overview

### Industrial Bulk Material Handling Solution

This heavy-duty bulk material handling system is engineered for high-capacity transfer operations, ideal for dockside and maritime logistics. The robust construction features an integrated network of conveyor systems, large-diameter piping, and flexible hoses designed to facilitate seamless material flow between facilities and vessels. Built for durability and efficiency, this system ensures reliable performance in demanding industrial environments.

#### Primary Application

Dockside Logistics, Maritime Material Transfer, Bulk Cargo Handling

## Technical Specifications

### Key System Components

- Conveyor belt system
- Lattice framework support
- Large-diameter vertical piping
- Flexible material transfer hoses

### Construction

Heavy-Duty • Industrial Grade • Modular Support Structure