

# Brushless DC Motor with Flat Cable Connector

This brushless DC motor is designed for various applications. It features a 4-pole design and operates on a 12V, 3-phase power supply.



## Overview

### High-Performance Brushless DC Motor

The VBLM14 is a compact and efficient brushless DC motor designed for high-speed applications such as household electrical appliances. Featuring a 4-pole, 3-phase design, it offers a balance of high rotational speed and low noise operation at 50dB. Its integrated flexible flat cable connector and precision-engineered metallic housing ensure easy integration and reliable performance in space-constrained environments.

## Key Performance Metrics

### Performance Highlights

**10800 rpm**

Rated Speed (Load)

**12 V**

Rated Voltage

**50 dB**

Noise Level

## Electrical Specifications

Rated Voltage	12 V
No-Load Current (Max)	100 mA
Phase	3-Phase
Poles	4

## Mechanical Performance

No-Load Speed	7200 rpm
Rated Speed under Load	10800 rpm

## Physical Dimensions

Mounting Hole Specification	3 x M2 x 0.4 Thru
Max Screw Insertion Length	1.7 mm
Housing Diameter	13.84 mm
Load Position	10.05 mm

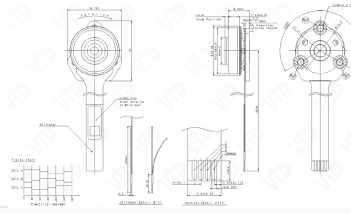
## Features & Construction

Connector Type	Flexible Flat Cable with Stiffener
Key Features	Low Noise, Brushless Design, Compact Form Factor, High Speed, Metallic Housing

## Technical Details

品名	零件号	规格	额定电压	额定功率	额定转速	重量
VBLH4	48	刷	12V	1000W	1500rpm	0.5kg

### 规格参数 Specification



Detailed technical drawing showing motor dimensions, terminal details, and electrical timing charts.

### Coil Timing

- Coil A Timing
- Coil B Timing
- Coil C Timing
- 120° Electrical Degrees