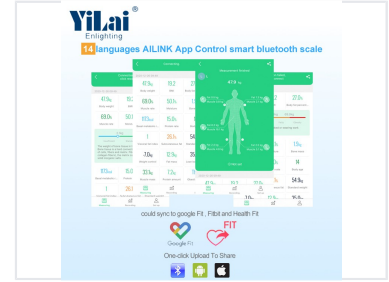


# Bluetooth Body Composition Analyzer with 8-Electrode Measurement

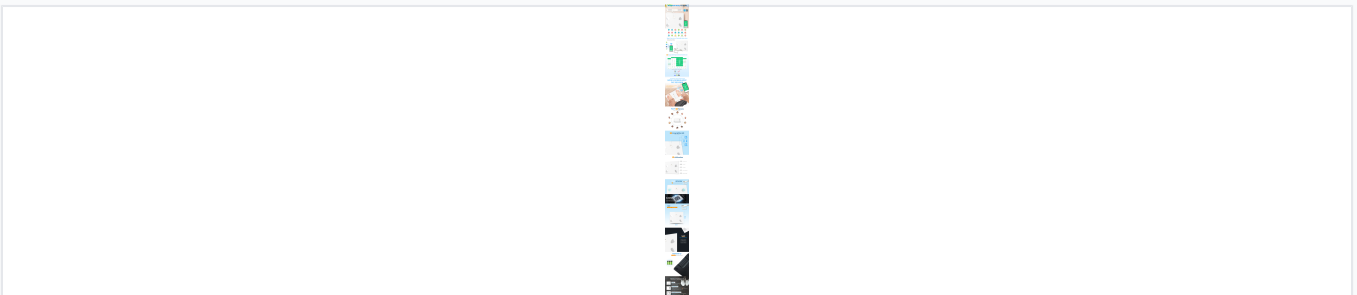
This Bluetooth body composition analyzer features 8 electrodes for segment analysis. It accurately measures individual body parts and syncs data to a mobile app.



## ADDITIONAL IMAGES



## Overview



Detailed breakdown of the 8-electrode segmental analysis and key product features.

## Advanced 8-Electrode Body Composition Analysis

This high-precision body composition analyzer utilizes advanced 8-electrode technology to perform comprehensive segment analysis, allowing for separate measurement of individual body parts including arms, legs, and torso. Designed for professional health monitoring, the scale connects seamlessly via Bluetooth to the Ai Link app for detailed tracking and data synchronization. Its robust design features a 6mm tempered glass platform and a clear LED display, providing a reliable and user-friendly experience for health-conscious individuals.

## Measurement Capabilities

|                 |                                       |
|-----------------|---------------------------------------|
| Electrode Count | 8                                     |
| Analysis Type   | Segmental Analysis, Arms, Legs, Torso |

## Technical Specifications

### Maximum Capacity

**180 kg**

Capacity

|                   |                     |
|-------------------|---------------------|
| Supported Units   | LB, KG, ST          |
| Division          | 100 g               |
| Scale Dimensions  | 320 x 280 x 25.5 mm |
| Platform Material | 6mm Tempered Glass  |

## Power and Connectivity

### Connectivity

Bluetooth

|              |                              |
|--------------|------------------------------|
| Power Source | 3 x AAA Batteries (Included) |
| App Name     | Ai Link                      |

## Display

|                |       |
|----------------|-------|
| Display Type   | LED   |
| Segment Height | 28 mm |