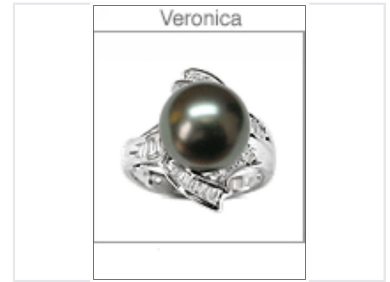


Black Pearl Ring with Diamond Accents

This elegant ring features a lustrous black pearl. Sparkling baguette-cut diamonds surround the pearl, set in a white metal band.



Product Overview

Sophisticated Elegance

This exquisite ring features a large, lustrous black pearl as its captivating centerpiece, offering a refined and modern aesthetic. The design is meticulously crafted with swirling metalwork that perfectly complements the brilliance of the surrounding baguette-cut diamonds. Ideal for high-end retail collections, this piece brings a touch of timeless sophistication to any jewelry ensemble.

Design Details

Primary Gemstone	Black Pearl
Accents	Baguette-cut diamonds
Metal Finish	White metal

Key Features

Design Quality

Premium Craftsmanship • Sophisticated Design

Style Characteristics	Modern Swirl Setting, Lustrous Finish, High-End Jewelry, Statement Piece
-----------------------	--