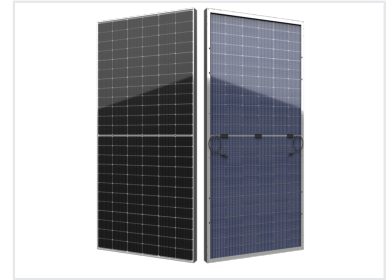


Bifacial High-Efficiency Solar Module

This high-efficiency PV module integrates 182mm large-size silicon wafers with PERC, multi-busbar, half-cell, and bifacial technologies. Technology integration enables this module to increase efficiency up to 21.1% with a maximum power output on the front side of 540W.



Product Overview

High-Efficiency Bifacial Solar Technology

This S4 bifacial series module optimizes energy generation by capturing reflected light, offering an additional power output of 10-30%. Designed for high-performance and reliability, it features dual-glass construction to mitigate micro-cracks and environmental degradation. The module is fully compatible with mainstream 1p and 2p mounting systems and supports 5400Pa static load on the frontside for enhanced structural integrity.

Performance Metrics

Additional Energy Generation

20 %

White Painted Ground

12 %

Sand Surface

7 %

Grassland

5 %

Water Surface

Technical Specifications

Key Module Characteristics

- Dual glass structure reduces micro-cracks and UV aging
- Multi-busbar cells reduce internal loss
- Cell spacing density of 0.5mm
- Qualified for 5400Pa static load (frontside)
- Low temperature coefficient

Certifications & Standards

Class A Fire Resistance, Anti-PID, Bifacial

Installation & Compatibility

Mounting System Compatibility

1p mounting systems • 2p mounting systems • Rail installation • Clamp installation