

Air to Water Heat Pump for Domestic Hot Water

This air-to-water heat pump provides efficient heating and hot water for homes. It offers up to 80% energy savings compared to electric heating.



ADDITIONAL IMAGES



Product Overview



Diagram showing the cycle heating system and integration for various residential and commercial applications.

High-Efficiency Domestic Hot Water Solution

This air-to-water heat pump provides an integrated solution for domestic heating and hot water needs, offering up to 80% energy savings compared to traditional electric heating. Designed for durability and performance in ambient temperatures ranging from -7°C to 43°C, the unit features a high-efficiency double-wall heat exchanger and corrosion-resistant cabinet. It is an eco-friendly choice that provides reliable, consistent hot water with minimal maintenance requirements.

Performance Metrics

Energy Performance

4.65 W/W

Peak COP

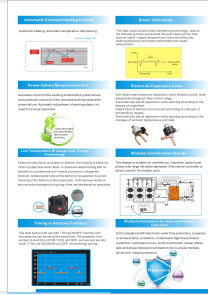
80 %

Energy Savings

60 °C

Max Water Temp

Technical Specifications



Detailed view of the smart defrosting technology, modular unit combination capability, and timing sections function.

Safety Systems

- Water flow protection
- Compressor temperature protection
- High/Low pressure protection
- Over-current protection
- Phase loss/dislocation protection
- Winter anti-freeze protection

Key Operational Capabilities

Smart Defrosting, Power Failure Memory, Low-Temperature Anti-Freeze, Modular Combination Design, Automatic Water Level Control

Technical Data

Standard Model Specifications

Model Series	Output Water (L/H)	Heating Capacity (KW)	Noise Level (dB(A))
3P/5P	225	10.5	52
10P/12P	375	17.5	54
15P	750	35	57
20P/25P	900	42	58
50P	1125	52.5	58
500ZB/S	900	175	65