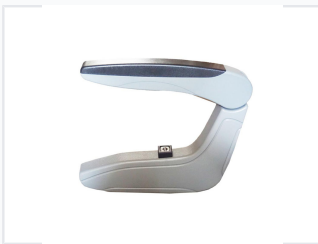


Adjustable Automotive Plastic Armrest

This plastic armrest is designed for automotive seating applications. It features an adjustable mechanism, allowing users to customize the height for optimal ergonomic positioning.



ADDITIONAL IMAGES



Product Overview

Ergonomic Automotive Comfort

This adjustable automotive armrest is engineered to enhance driver and passenger comfort during transit. Featuring a robust plastic construction, it offers both durability and a sleek, modern aesthetic that integrates seamlessly into various vehicle interiors. The integrated adjustment mechanism allows for precise height and angle positioning, ensuring optimal ergonomic support for different users.

Technical Specifications

Adjustment Capabilities

- Height adjustment
- Angle adjustment
- Pivoting joint mechanism

Included Components

- Mounting hardware
- Central adjustment switch

Material	Durable Plastic
-----------------	-----------------

Color Scheme	Gray, Black
---------------------	-------------

Service & Compatibility

Service Availability

OEM Service • ODM Service

Compatible Applications	Luxury Bus, Business Seat, School Bus, City Bus
--------------------------------	---