

# AC Contactor - SGC1-F Series

AC contactors connect/disconnect lines and frequently control motors and other equipment. When working with a thermal relay, it controls large current with small current and provides overload protection.



## ADDITIONAL IMAGES

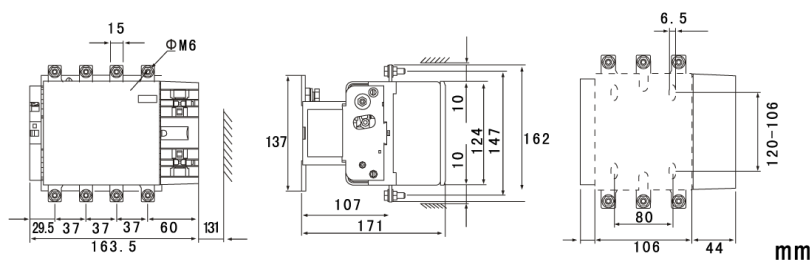


## Product Overview

### SGC1-F Series AC Contactor

The SGC1-F series AC contactor is engineered for the reliable connection and disconnection of electrical lines, making it an essential component for controlling motors and other industrial equipment. It effectively manages high current loads using a low-current control signal and integrates seamlessly with thermal relays to provide robust overload protection. Designed for industrial environments, this contactor ensures consistent performance and safety in demanding switching applications.

## Technical Specifications



Technical schematic illustrating the dimensions and mounting configuration for engineering integration.

### Degree of Protection

IP20

### Compliance Standard

IEC60947-4-1

### Rated Frequency

50 Hz

### Utilization Category

AC-3, AC-4

### Operating Temperature

-5°C to +40°C

## Electrical Ratings

Maximum Rated Current	800 A
Maximum Rated Voltage	1000 V
Pick-up Voltage Range	85% - 110% U <sub>c</sub>

## Certifications

Certifications	CE
----------------	----