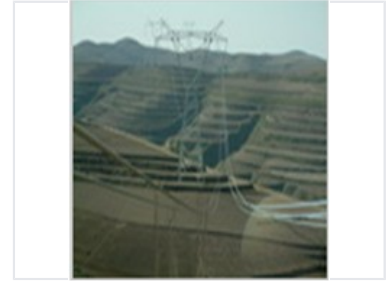


750kV High-Voltage Power Transmission Project

This project enhances power grid capacity and reliability using high-voltage transmission. Steel lattice towers support overhead power lines for long-distance electricity transmission.



Project Overview

750kV Lanzhou East - Silver Transmission Line Project

This high-voltage power transmission infrastructure project is designed to facilitate robust long-distance electricity transport. By leveraging a 750kV voltage capacity, the project significantly enhances regional power grid capacity and overall reliability. The infrastructure is specifically engineered to operate in diverse topographical environments, ensuring stable power delivery across challenging landscapes.

Technical Specifications

Voltage Rating

750 kV

Voltage Class

Infrastructure Components

Steel Lattice Tower, Overhead Transmission Lines, High-Voltage Grid

Operational Capabilities

Primary Objectives

- Enhanced power grid capacity
- Increased long-distance energy reliability
- Grid stability in complex terrain