

63A 230V AC Disconnecter Circuit Breaker

This disconnecter circuit breaker is suitable for AC 50/60Hz circuits with a rated voltage of 230V and a rated current up to 63A. It connects or disconnects circuits without a load, and isolates the circuit to the power supply.



ADDITIONAL IMAGES



Overview

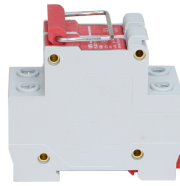


Product terminal connection diagram and clear ON/OFF indicator.

Professional Electrical Disconnection

This disconnecter circuit breaker is engineered for secure electrical circuit isolation, specifically designed for 230V AC 50/60Hz systems. It excels in load-free switching applications, effectively isolating power supplies during maintenance to ensure maximum operator safety. Compliant with international standards, it provides a reliable and robust solution for professional power distribution environments.

Electrical Specifications



Device labeling highlighting key electrical parameters and compliance.

Rated Current

- 32
- 63

Rated Operating Voltage

230 V

Rated Impulse Withstand Voltage

4 kV

Standards & Certification

Industry Compliance

GB14048.3, IEC60947-3, CE

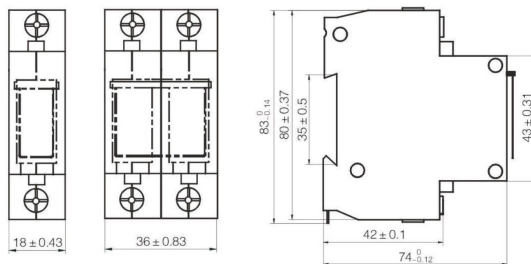
Performance Metrics

Mechanical Life

10000 cycles

Operations

Technical Details



Precise mechanical dimensions for installation and integration planning.

Operating Characteristics

Parameter	Value
Short-time withstand current (I _{cw})	12I _e (1s)
Short-circuit making capacity (I _{cm})	20I _e (1s)