

60 Series Brushless DC Motor

This brushless DC motor delivers high torque up to 0.75Nm. It features a wide speed range, high efficiency, and long service life.



Product Overview

High-Performance 60 Series BLDC Motor

The 60 Series Brushless DC motor is engineered for high-torque applications up to 0.75Nm, offering a wide speed range and exceptional efficiency. Designed for long-life performance, it is particularly well-suited for precision tasks such as electric seat adjustments in automotive environments. Its compact 60mm frame size combined with an 8-pole design ensures reliable power delivery and smooth operation.

Key Features

High Torque, Wide Speed Range, High Efficiency, Long Life Time, Brushless Design

Electrical Performance

Model Comparison

Model	Rated Power (W)	Rated Torque (Nm)	Rated Current (A)	Weight (kg)	Length (mm)
60DMW75-3630	80	0.25	3	0.9	75
60DMW95-3630	160	0.5	6	1.2	95
60DMW115-3630	230	0.75	0.75	1.6	115

Rated Speed

3000 rpm

Rated Speed

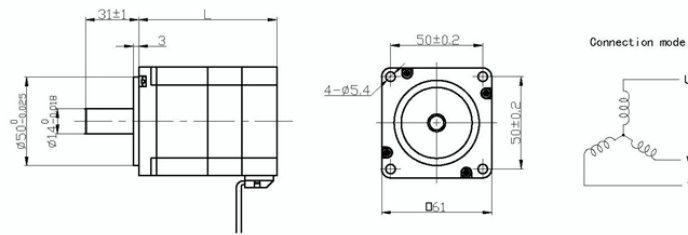
4100 rpm

No Load Speed

Nominal Voltage

36 V

Technical Specifications



Dimensional blueprint and connection diagram for the 60 Series Brushless DC Motor, highlighting mounting points and shaft specifications.

Insulation Class

Class B

Operating Conditions

- Ambient Temperature: -20 to +40
- Hall Effect Angle: 120 degree electrical
- Dielectric Strength: 500VDC for one minute
- Shaft Run Out: 0.025mm

Winding Type

Star

Number of Poles

8

Wiring & Connectivity

Lead Wire Configuration

Lead No.	Color	Gauge	Function
1	RED	18AWG UL1569	Phase U
2	YEL	18AWG UL1569	Phase V
3	BLA	18AWG UL1569	Phase W
4	RED	26AWG UL1569	+5V
5	BLU	26AWG UL1569	Hall A
6	GRE	26AWG UL1569	Hall B
7	WHI	26AWG UL1569	Hall C
8	BLA	26AWG UL1569	GND