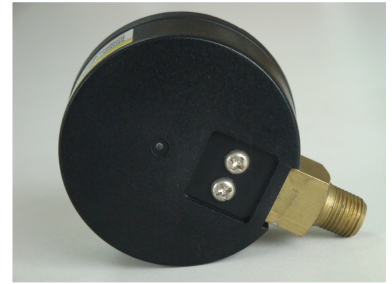


50mm Pressure Gauge with Brass Connection

This 50mm pressure gauge is designed for general purpose pressure measurement. It features a plastic housing and a brass connection, with a pressure range of 0-100 psi.



ADDITIONAL IMAGES



Product Overview

Professional Pressure Measurement

This 50mm pressure gauge is a robust, general-purpose instrument designed for accurate pressure monitoring in industrial and commercial environments. Featuring a durable housing and a reliable brass connection, it provides consistent performance across a wide range of pneumatic and hydraulic systems. Its compact design allows for easy installation in confined spaces, while the clear dial ensures precise readings for effective process control.

Technical Specifications

Dial Size	50 mm
Pressure Range	-1 to 1000 bar
Gauge Type	Liquid Filled, Dry Type
Mounting Type	Bottom, Back, Lower Back

Materials and Construction

Case Materials

- SS304
- SS316
- Black Steel
- Plastic

Window Options

- Glass
- Tempered Glass
- Safety Glass
- PC Glass
- Acrylic

Internal Components

Component	Material Options
Movement	SS304 / Brass
Bourdon Tube	SS316 / Phosphor Bronze
Connection Material	Brass
Thread Standards	PT, NPT, G