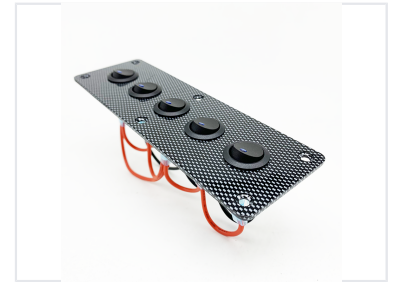
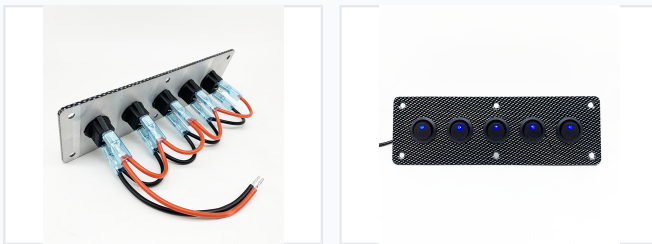


# 5-Gang Waterproof Rocker Switch Panel

This 5-gang rocker switch panel is designed for DC 12V/24V systems. It features waterproof LED rocker switches suitable for car and marine applications.



## ADDITIONAL IMAGES



## Product Overview



### Professional 5-Gang Marine & Automotive Control Solution

This 5-gang rocker switch panel is engineered for high-performance DC 12V/24V systems in marine and automotive environments. Featuring a durable aluminum plate with a water transfer printing finish, it offers IP65 waterproof protection and corrosion resistance for long-term reliability. The pre-wired design and integrated blue LED indicators make it an ideal choice for managing multiple electrical circuits in boats, RVs, and off-road vehicles.

## Technical Performance

### Electrical Ratings

**20 A**

Rating at 12V

**10 A**

Rating at 24V

Operating Voltage Range

DC 12V - 24V

Operating Temperature

-25°C to +85°C

## Design & Construction



### Construction Materials

Aluminium, ABS, Metal, Rubber Seals

### Panel Technology

Water transfer printing (Carbon Fiber Style)

### Panel Size

18.2cm (L) x 6cm (W)

## Features & Protection



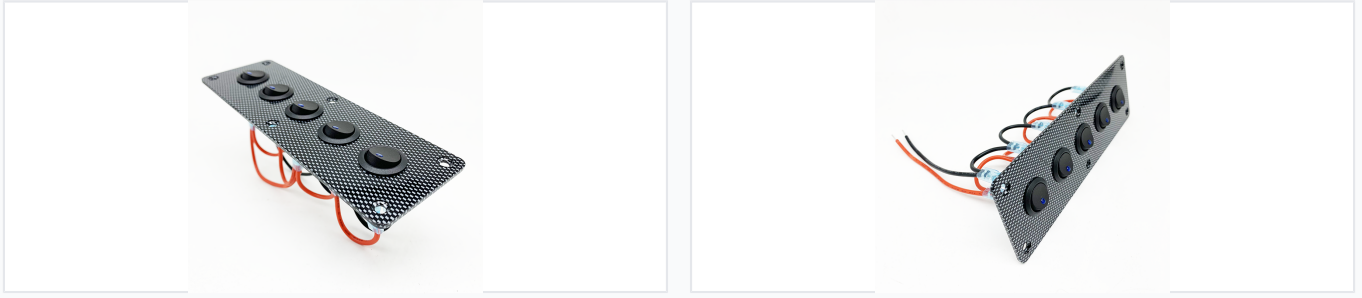
### Ingress Protection

IP65 Waterproof • Dust-proof • Corrosion-resistant

### Switch Configuration

- 5-Gang Rocker Switches
- Function: ON-OFF
- Integrated Blue LED Indicators
- Rubber Sealing Covers

## Installation & Compatibility



### Installation Details

- Pre-wired for simple setup
- Horizontal or vertical mounting
- Includes mounting screws
- Includes set of tabs/labels

### Compatible Applications

Marine/Boats, Yachts, RVs/Caravans, Trucks, UTV/ATV, Buses, Airplanes

## Manufacturing Quality



### Internal Wiring Standards

| Specification   | Value |
|-----------------|-------|
| Wire Gauge      | 22AWG |
| Voltage Rating  | 600V  |
| Max Temperature | 105°C |
| Standard        | AWM   |