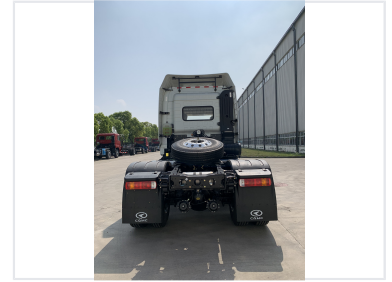


# 4x2 Tractor Truck Prime Mover

This 4x2 tractor truck is a robust prime mover designed for heavy-duty hauling applications. Its durable chassis, powerful engine, and comfortable cabin make it suitable for diverse operating conditions.



## ADDITIONAL IMAGES



## Overview

### Heavy-Duty Prime Mover

This 4x2 tractor truck is engineered for reliability and performance in long-haul and regional transport logistics. Built with a robust chassis and a high-torque engine, it offers excellent maneuverability and fuel efficiency for various trailer applications. The cabin is designed with driver comfort in mind, featuring ergonomic seating, climate control, and advanced safety systems to ensure productivity on the road.

## Performance & Engine

### Engine Performance

**345 hp**

Horsepower

**1660 N.m**

Max Torque

**9.84 L**

Displacement

### Engine Specifications

| Parameter         | Value        |
|-------------------|--------------|
| Cylinders         | 6            |
| Max Rated Speed   | 1900 rpm     |
| Emission Standard | Euro V       |
| Bore x Stroke     | 118 x 150 mm |

## Dimensions & Weight

### Weight Specifications

- Kerb Weight: 6805 kg
- Rated GVW: 18000 kg
- Quasi-tow Mass: 34865 kg

|                           |                       |
|---------------------------|-----------------------|
| <b>Overall Dimensions</b> | 5915 x 2495 x 3200 mm |
|---------------------------|-----------------------|

## Cabin & Comfort

### Cabin Amenities

Air Conditioning, MP3/Radio, Sleeper Berth, Power Windows, Hydraulic Cab Reversal, Adjustable Steering Wheel

## Drivetrain & Chassis

### Axle Configuration

4x2 Drive • Front Axle: 7.5T • Rear Axle: 16T

### Transmission

9 speeds

## Safety & Electrical

### Braking System

- Dual circuit compressed air brake
- Drum braking
- Spring energy parking brake
- Engine exhaust brake
- ABS included

### Electrical System

24V system with 150AH dual batteries