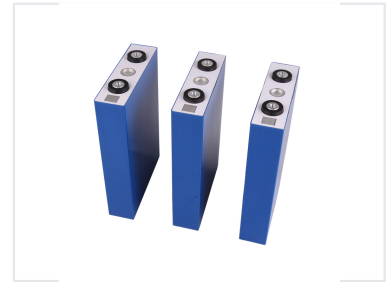
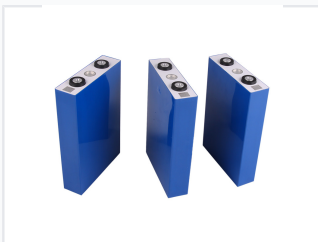


3.2V 100Ah LiFePO4 Prismatic Battery Cell for Solar Street Lights

This 3.2V 100Ah LiFePO4 prismatic battery cell is designed for solar street light applications. It provides excellent thermal stability, a long cycle life, and high energy density.



ADDITIONAL IMAGES



Product Overview

High-Performance LiFePO4 Energy Solution

This 3.2V 100Ah LiFePO4 prismatic battery cell is engineered for reliability in solar street lighting and energy storage systems. It offers a significantly longer cycle life and higher power density compared to traditional lead-acid alternatives, providing an efficient drop-in replacement. With built-in safety chemistry and a wide operating temperature range, this cell is designed for demanding environments requiring consistent power.

Cell Specifications

Performance Metrics

3.2 V Nominal Voltage	100 Ah Capacity	3.5 kg Weight
---------------------------------	---------------------------	-------------------------

Voltage Cut-offs

Metric	Voltage
Charge Cut-off	3.6V
Discharge Cut-off	2.6V

Battery Pack Configuration

12V Pack Configuration

- Voltage: 12V
- Capacity: 100Ah
- Structure: 4s1p
- Included: BMS, wire, connector, and enclosure

Performance Ratings

20 A

Max Constant Discharge

50 A

Peak Current

50 A

Max Constant Charge

Operational Conditions

Temperature Range

-20 to 60

Certifications

CE, UL, RoHS

Application

Common Applications

Solar/Wind Energy Storage, Wheelchairs & Scooters, Golf Trolleys, UPS Back-up, Electric Bikes

Warranty

Warranty Period

3 Years