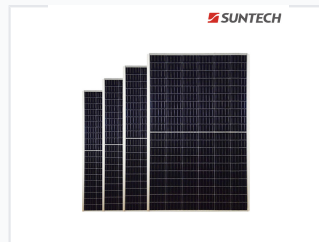


300W Polycrystalline Solar Panels for Home Use

These polycrystalline solar panels are designed for home solar systems. The 300W panels provide a reliable renewable energy solution for residential use.



ADDITIONAL IMAGES

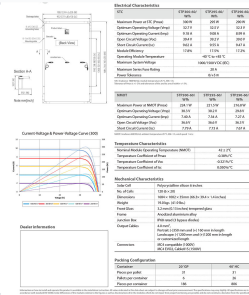


Product Overview

High-Efficiency Solar Power Solution

These 300W polycrystalline solar panels are engineered for optimal energy conversion and reliability in residential solar systems. With advanced half-cell technology and excellent weak-light performance, these modules deliver consistent power even in cloudy or hazy conditions. Built to withstand harsh environmental stressors, they offer a durable and long-term renewable energy solution for your home or project.

Technical Specifications



Detailed technical layout including dimensions, mounting slots, and drainage points.

Electrical Characteristics (STC)

Parameter	300W Model	295W Model	290W Model
Max Power (Pmax)	300 W	295 W	290 W
Optimum Voltage (Vmp)	32.7 V	32.5 V	32.3 V
Optimum Current (Imp)	9.18 A	9.08 A	8.99 A
Open Circuit Voltage (Voc)	39.4 V	39.2 V	39.0 V
Short Circuit Current (Isc)	9.62 A	9.55 A	9.47 A

Mechanical Dimensions

1684 mm
Length

1002 mm
Width

35 mm
Frame Thickness

19 kg
Weight

Certifications & Warranty



International certifications ensuring safety, environmental management, and performance standards.

Warranty Period

- 12-year product warranty
- 25-year linear performance warranty
- 97.5% power output in first year
- 80.7% power output at year 25

Compliance & Certifications

IEC 61215, IEC 61730, CE, ISO 9001, ISO 14001, ISO 45001

Environmental Durability

Static Load Capacity

- Front side: 5400 Pascal
- Rear side: 3800 Pascal