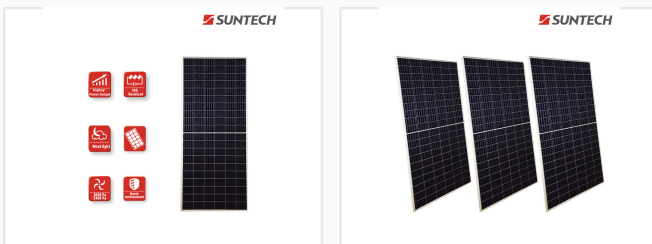


# 300W Polycrystalline Solar Panel for Home Power

This 300W polycrystalline solar panel is designed for home power systems. Its robust construction ensures durability and long-term reliability, making it suitable for various environmental conditions.



## ADDITIONAL IMAGES



## Overview



Polycrystalline half-cut cell technology ensures maximum power output in various weather conditions.

### High-Efficiency Polycrystalline Solar Module

This 300W series polycrystalline solar panel is engineered for residential power systems, offering superior energy conversion and long-term reliability. Designed to excel in diverse environmental conditions, the module features advanced cell technology that minimizes power loss and enhances performance in weak light. With a robust build and certified durability, it provides a cost-effective and sustainable energy solution for home installations.

## Key Features

Key Benefits	PID Resistant, Weak Light Performance, 120-Cell Half-Cut Design, High Efficiency, IP68 Junction Box
--------------	---

## Electrical Performance

### Performance (STC)

<b>305 W</b> Maximum Power	<b>39.4 V</b> Open Circuit Voltage	<b>9.75 A</b> Short Circuit Current	<b>18.1 %</b> Module Efficiency
-------------------------------	---------------------------------------	--	------------------------------------

## Mechanical Data

### Physical Dimensions

- Dimensions: 1684 x 1002 x 35 mm
- Weight: 19.0 kg
- Frame: Anodized aluminium alloy
- Front Glass: 3.2 mm tempered glass

## Operating Conditions

### Environmental Ratings

Metric	Rating
Front Load	5400 Pa
Rear Load	3800 Pa
Operating Temperature	-40°C to +85°C
Max System Voltage	1000/1500 V

## Warranty

### Standard Warranty

- 12-year product warranty
- 25-year linear performance warranty
- 97.5% power output in first year
- 80.7% power output at 25th year