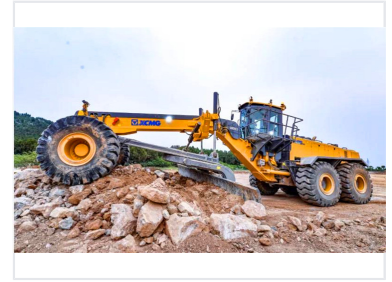


# 250HP Mining Motor Grader

This 250HP motor grader is used for ground leveling and slope scraping in large areas. It is essential machinery for construction, road building, and water conservancy projects.



## ADDITIONAL IMAGES



## Overview



Heavy-duty motor grader performing precise grading operations.

### High-Performance Mining Motor Grader

This 250HP motor grader is engineered for heavy-duty earthmoving, ground leveling, and road construction in demanding environments such as mining sites, airports, and highways. It utilizes advanced load-sensitive hydraulics and energy-efficient power control technology to provide operators with precise, micro-level control. The machine features a rugged design, including a wet-type brake axle and an elevated, vibration-dampened cabin for superior reliability and operator comfort.

## Engine & Performance

### Rated Power

**178 kW**

Rated Power

**2200 rpm**

Rated Speed

### Engine Model

QSB6.7

## Technical Dimensions

Overall Dimensions	9300 x 2625 x 3420 mm
Total Weight	17000 kg
Front to Rear Axle Distance	6447 mm
Front Axle Ground Clearance	586 mm

## Components



Built with a high-strength moldboard and robust frame for mining environments.

Tire Specification	17.5-25
--------------------	---------

## Key Advantages



Ergonomic operator cabin designed for visibility and comfort.

### Performance Highlights

- Load-sensitive hydraulic system for precise micro-control
- Intelligent fan control for energy efficiency and noise reduction
- Wet-type brake axle for high reliability
- Advanced vibration and noise reduction technology
- Torque converter interlock for high transmission efficiency