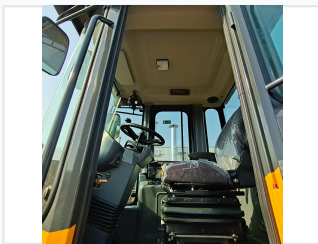


## 2.5 Ton Wheel Loader

This 2.5-ton wheel loader is designed for efficient material handling in diverse environments. It features a robust powertrain and hydraulic system for optimal performance and operator comfort.



### ADDITIONAL IMAGES



### Product Overview

#### High-Performance 2.5 Ton Wheel Loader

This 2.5-ton wheel loader is engineered for high productivity in demanding construction and agricultural environments. Featuring a robust, vibration-absorbing cabin and intuitive pilot joystick controls, it prioritizes operator comfort and operational precision. The versatile design includes a quick-hitch system for rapid attachment changes, ensuring efficiency across a wide range of loading and material handling tasks.

### Performance

Rated Load Capacity	2.5 ton
Engine Options	Perkins, Yanmar, Kohler, Xinchai

### Operator Comfort & Safety

#### Cabin Features

- Vibration-absorbing seat
- Panoramic floor-to-ceiling tinted glass
- Rear-view camera with color screen
- Ergonomic pilot joystick controls

### Operational Efficiency

#### Key Operational Features

Solid Frame Structure • Articulated Steering • High Dumping Clearance • Hydraulic Transmission

Quick Hitch System	Yes
--------------------	-----