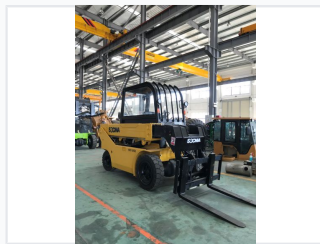


2.5-3 Ton Compact Telescopic Forklift

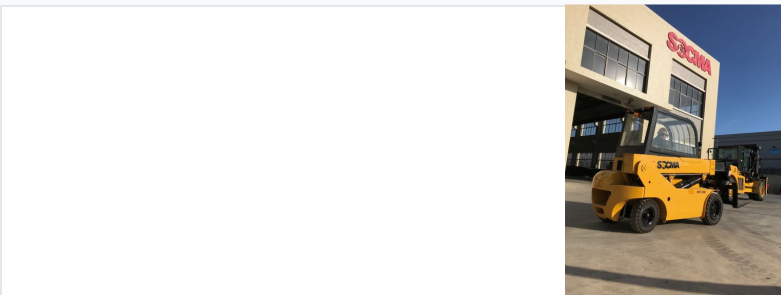
This compact telescopic forklift offers a lifting capacity of 2.5 to 3 tons. The teletruk's telescopic boom extends forward, enabling single-side loading and unloading of trucks and containers.



ADDITIONAL IMAGES



Product Overview



Versatile Material Handling

This compact telescopic forklift offers superior lifting capacity and extended reach, surpassing conventional mast-based forklifts. Designed for high efficiency and energy savings, it is ideal for factories, docks, construction sites, and warehouses. With its ability to perform single-side loading and unloading, it reduces double handling and minimizes space occupancy in busy logistics environments.

Performance Metrics



Key Performance Metrics

3000 kg

Rated Load (Max)

4000 mm

Max Lifting Height

2090 mm

Max Horizontal Reach

20 km/h

Max Travel Speed

Technical Specifications



Dimensions & Weights

Parameter	Value
Length (w/o forks)	2920 mm
Frame Width	1300 mm
Overhead Guard Height	2170 mm
Operation Weight	4350 - 4500 kg
Min Turning Radius	2800 mm

Engine & Drive

- Diesel engine with high power efficiency
- Double turbo hydraulic torque converter
- Stepless speed change
- Four-wheel drive capability
- Electronic off-axle function

Features



Design Advantages

- Maintenance-free battery
- Integral frame design for high rigidity
- Quadrilateral telescopic arm for strength
- Low-noise luxury wide-view cabin

Advanced Functionalities

Quick Hitch, Electronic Handbrake, Coaxial Flow Amplification Steering, Adjustable Steering Column, Air-conditioned Cabin