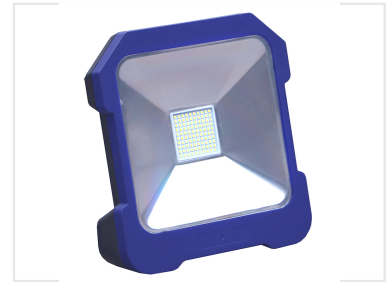


20W Portable LED Work Light

This 20W LED task light is designed for portable illumination. It features a durable, impact-resistant housing with an integrated handle and a heavy-duty power cord.



ADDITIONAL IMAGES



Overview

Professional Portable Illumination

This 20W portable LED work light is engineered for demanding work environments, featuring a rugged, impact-resistant nylon housing designed for durability on construction sites and in workshops. It utilizes high-efficiency SMD LED technology to provide bright, reliable illumination with adjustable color temperatures. With its portable design and optional outlet socket for daisy-chaining, this light offers a versatile solution for professional contractors and maintenance teams.

Technical Specifications

Power Rating

20 W

Power Consumption

Energy Efficiency Class

A+

Color Temperature Range

2700K - 6500K

Color Rendering Index (Ra)

80 Ra

Beam Angle

120 degrees

Durability & Environment

Impact Class

IK07

Working Temperature

-20°C to 55°C

Housing Material

Impact-resistant Nylon

Features

Key Features

- Portable design with integrated handle
- Clear or frosted PC diffuser options
- Optional outlet socket for linking equipment
- Class I electrical protection

Certifications

CE