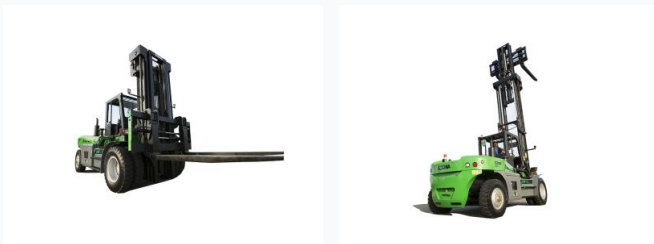


20-Ton Diesel Forklift Truck

This heavy-duty 20-ton diesel forklift truck is designed for robust material handling. It features a powerful diesel engine, a high-strength mast, and forks for safely and efficiently handling heavy loads.



ADDITIONAL IMAGES



Overview



Robust 20-ton capacity forklift designed for heavy industrial material handling.

Heavy-Duty 20-Ton Diesel Forklift

This 20-ton diesel forklift is engineered for demanding industrial applications, featuring a high-quality turbocharged engine with low fuel consumption and significant torque reserves. The vehicle's structural integrity is verified through 3D finite element analysis, ensuring superior stability and reliability during heavy-load operations. Designed for operator efficiency, it includes a full-hydraulic steering system, pilot valve controls, and a climate-controlled cabin for maximum comfort in any environment.

Performance Metrics



The high-strength mast system provides stable lifting for heavy loads.

Key Performance Indicators

20 t

Rated Load

1250 mm

Load Center

3500 mm

Lifting Height

30 km/h

Max Travel Speed

Engine & Powertrain

Engine Specifications

Configuration	Displacement	Power Output	Rated Speed
Option 1 (6-Cylinder)	9.726L	162KW	2000rpm
Option 2 (6-Cylinder)	8.3L	160KW	2200rpm

Dimensions

Physical Dimensions

- Overall Length (with forks): 8340 mm
- Overall Width: 3050 mm
- Wheelbase: 4000 mm
- Fork Dimensions: 2000 x 260 x 100 mm
- Min. Turning Radius: 6250 mm

Chassis & Braking



Box-type frame structure ensures longitudinal and transverse stability.



Equipped with 14.00-24-28PR tires for superior load distribution on rough terrain.

Chassis & Braking System

- Tire Specs (Front/Rear): 14.00-24-28PR
- Tire Quantity (Front/Rear): 4 / 2
- Braking System: Hydraulic clamp disc brakes
- Steering: Full-hydraulic transverse oil cylinder type
- Transmission: 2 Front / 1 Rear gears

Operator Comfort



The ergonomic cabin features AC, heater, and pilot controls for reduced operator fatigue.

Cabin & Control Features

Full Cab, Air Conditioning, Heater, Rear View Display, Pilot Valve Control, Hydraulic Fork Positioner

Operational Performance

Lifting & Gradeability

Parameter	With Load	Without Load
Max Lifting Speed	260 mm/s	270 mm/s
Max Lowering Speed	310 mm/s	260 mm/s
Gradeability	20%	22%

Service & Support

Comprehensive Service Package

Standard support includes a 12-month or 2000-hour warranty. We provide global access to genuine spare parts, professional installation guidance, and tailored training programs covering operation, maintenance, and safety regulations to ensure long-term machine productivity.