

# 16 Ton LNG Forklift Truck with Tire Clamp

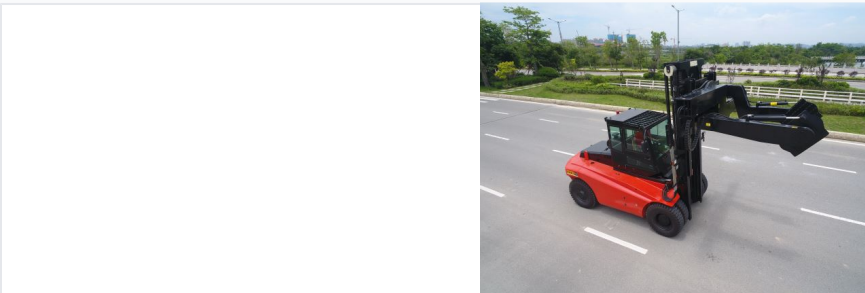
This 16 ton LNG forklift truck is equipped with a tire clamp attachment for efficient and safe handling of large tires. Powered by LNG, it offers reduced emissions compared to traditional diesel models.



## ADDITIONAL IMAGES



## Overview



### Heavy-Duty LNG Material Handling Solution

This 16-ton heavy-duty forklift is specifically engineered for demanding industrial environments, featuring a specialized tire clamp attachment for the secure handling of large-scale tires. Powered by Liquefied Natural Gas (LNG), it offers a cleaner and more cost-effective alternative to traditional diesel engines without sacrificing performance. The vehicle is built on a robust box-type frame validated through 3D finite element analysis to ensure maximum stability and reliability during high-capacity operations.

## Key Performance Metrics



### Performance Highlights

**16 t**

Rated Load

**3500 mm**

Lifting Height

**25000 kg**

Service Weight

**150 kN**

Traction

## Engine & Powertrain



### Fuel Type

LNG (Liquefied Natural Gas) • Low Emissions

### Engine Configurations

Option	Displacement	Power Output	Rated Speed
Standard High-Efficiency Engine	6.494L	129KW	2200
Premium Turbocharged Engine	6.7L	142KW	2200

### Number of Cylinders

6

## Chassis & Mobility

### Tyre Specifications

- Front: 12.00-24-18PR
- Rear: 12.00-20-18PR
- Configuration: 4 Front / 2 Rear

### Min. Turning Radius

5800 mm

### Travel Speed (Load/Unload)

26 / 30 km/h

## Technical Systems

### Braking System

Hydraulic clamp disc brakes with superior thermostability

### Steering System

Full-hydraulic transverse oil cylinder type

### Control System

Pilot valve control for reduced labor intensity

## Operational Dimensions

### Physical Dimensions

Parameter	Value
Overall Length (with forks)	7640 mm
Overall Width	2750 mm
Mast Height (lowered)	3625 mm
Wheelbase	3800 mm
Fork Dimensions	1800 x 220 x 100 mm

## Operator Comfort



### Cabin Equipment

Air Conditioning, Heater, Rear View Display, Full Enclosed Cab

## Attachments



### Tire Clamp Performance

- Working Pressure: 16 Mpa
- Oil Flow Requirement: 60 l/min
- Hydraulic fork positioner included