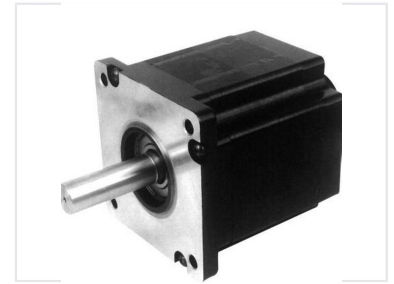


110mm Brushless DC Gear Motor

This 110mm series brushless DC gear motor features high power density and a compact design. It is suitable for applications requiring precise speed control, high efficiency, and extended operational lifespan.



ADDITIONAL IMAGES



Overview

High-Performance 110mm Brushless DC Motor

This 110mm series brushless DC motor offers high power density and efficiency, making it an ideal replacement for traditional AC or brushed motors in energy-saving applications. Featuring a permanent magnet construction and waterproof protection, it provides reliable performance with low noise and no spark interference. Its versatile design supports integration with various reducers and electronic control technologies for precise motion control.

Performance Highlights

Key Performance Metrics

310 VDC

Rated Voltage

8000 RPM

Max Speed

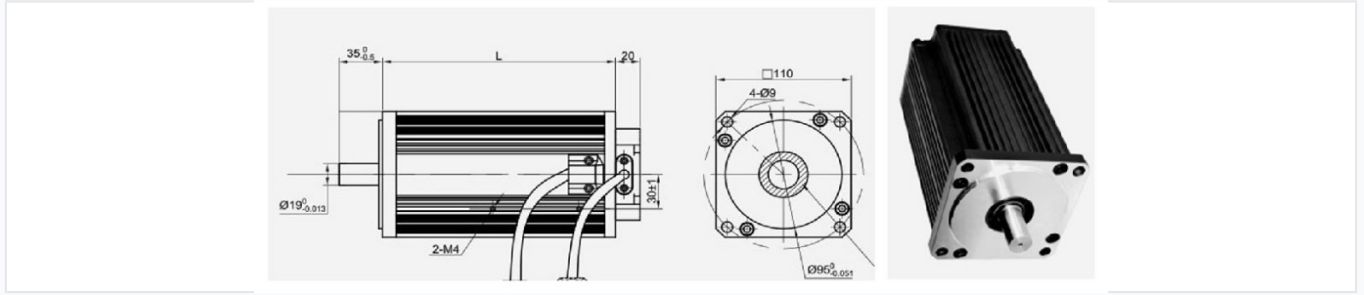
7.16 N·m

Max Torque

2249 W

Max Power

Technical Specifications



Dimensional diagram showing the 110mm square flange, 19mm shaft diameter, and mounting hole configurations.

Motor Type	Gear Motor
Construction	Permanent Magnet
Commutation	Brushless
Number of Poles	8
Protection Features	Waterproof, Overvoltage Protection, Undervoltage Protection, Overcurrent Protection, Overheating Protection

Operational Standards

Insulation Class

Class B • Class F

Protection Class

IP40 • IP65

Work Duty

- S1 (Continuous)
- S2
- S3

Model Variants

Model Comparison Table

Model Number	Power (W)	Speed (RPM)	Torque (N·m)	Length (mm)	Weight (kg)
110-BLB0J062204RN-01	625	2000	2	125	4.8
110-BLB0J125404RN-01	1250	4000	4	155	5.2
110-BLB1J188804RN-01	1885	8000	6	185	5.5
110-BLB2J225304RN-01	2249	3000	7.16	210	6

Applications

Common Applications

CNC Machine Tools, Industrial Control, Electric Bicycle, Medical Field, Home Appliances, Boat & Car, Fans

Certifications

Compliance & Certifications

CCC, CE