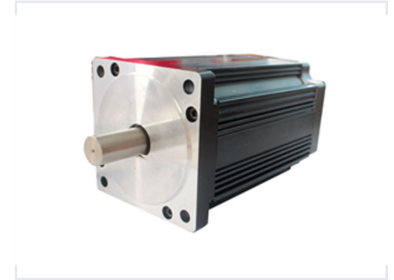


110 Series Brushless DC Motor

This brushless DC motor delivers high torque up to 6.6Nm and power from 440-1700W. It features a wide speed range, high efficiency, and long lifespan.



Product Overview

High-Performance 110 Series BLDC Motor

The 110 Series Brushless DC Motor is engineered for high-torque industrial applications, delivering up to 6.6Nm of torque and power ranging from 440W to 1700W. Designed for long-life performance and high efficiency, these motors feature a wide speed range and robust construction. They are ideal for precision motion control, robotics, and automation equipment requiring reliable, low-noise operation.

Key Performance Metrics

Performance Highlights

1700 W

Max Rated Power

6.6 Nm

Max Rated Torque

8

Number of Poles

310 V

Operating Voltage

General Specifications

Insulation Class

Class B

Winding Type

Star

Hall Effect Angle

120 ° electrical

Shaft Run Out

0.025 mm

Dielectric Strength

500VDC for one minute

Ambient Temperature Range

-20 to +40

Electrical Data by Model

Model Specifications Comparison

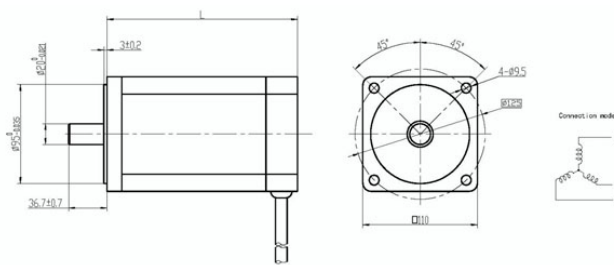
Model	Power (W)	Rated Torque (Nm)	Rated Speed (rpm)	Rated Current (A)	Weight (kg)	Length (mm)
110-DMW93-31025	440	1.65	2550	2	4.2	93
110-DMW123-31025	900	3.3	2550	3.5	5.5	123
110-DMW153-31024	1300	5	2400	5.1	6.8	153
110-DMW183-31025	1700	6.6	2550	6.7	8.1	183

Wiring & Connectivity

Lead Wire Configuration

Lead No.	Color	Gauge	Function
1	RED	14AWG UL1015	Phase U
2	YEL	14AWG UL1015	Phase V
3	BLA	14AWG UL1015	Phase W
4	RED	26AWG UL1569	+5V
5	BLU	26AWG UL1569	Hall A
6	GRE	26AWG UL1569	Hall B
7	WHI	26AWG UL1569	Hall C
8	BLA	26AWG UL1569	GND

Mechanical Dimensions



Dimensional drawing showing the 110mm front flange, shaft specifications, and mounting hole patterns.

Mounting & Physical Dimensions

- Front Flange Diameter: 110mm
- Mounting Holes: 4 x $\varnothing 9.5$ mm at 45° intervals
- Shaft Diameter: $\varnothing 9.5$ - $\varnothing 5.35$ mm
- Shaft Length: 36.7 ± 0.7 mm
- Flange Thickness: 3 ± 0.2 mm